



INVESTING ART IN  
ENGINEERING



**M/s. BHINGARE CASTINGS PVT. LTD.**

[www.bhingarecastings.com](http://www.bhingarecastings.com)

## GET TO KNOW ABOUT US

M/s. **BHINGARE CASTINGS PVT. LTD.**, founded in 2010, is a Leading Investment Casting Firm that has Manufactured over thousands of Components in a number of Industries.

We are proud to offer **ISO 9001:2015** Quality, Attentive Service and Technical Support & Design Assistance to all our customers whether they need just one piece or thousands.

Our Investment Castings Operation proudly carries on that history and is known as the most Reliable Supplier of Premium Lost Wax Investment Casting in a variety of Alloys for numerous Industries.

Investment Casting is a Special Technique with Limitless Potential, and in today's Competitive and Cost-Conscious Manufacturing Environment, our hands-on approach to working with clients enables them to continuously find this potential in New Applications for our Precise Castings. We cater to the demands of our clients and offer a standard of service that is the Foundation of Enduring Partnerships. We collaborate with our clients from the beginning to the end, and we may even offer Finished Machined Components and Sub – Assemblies.

M/s. Bhingare Castings Pvt. Ltd. is a part of Siddhi Forge Group, Ahmednagar. The Siddhi Forge Group has been producing the best Forgings and Machined Components for a variety of Industries for more than 25 years. Siddhi Group has become one of the top producers of Forgings and Machined Components throughout the years, providing High-Quality Goods to satisfy a range of varying and expanding needs. More than a thousand Components have been produced by the group, whose annual revenue is more than INR 150 crores, for use in numerous Industries in Automobile Sector, Farm Sector and General Engineering Sector.

### FOCUS AREA

- PROCESS INDUSTRY
- CUTTING TOOL INDUSTRY
- AUTOMOBILE INDUSTRY
- ELECTRICAL INDUSTRY
- AVIATION INDUSTRY
- VALVE INDUSTRY
- OIL AND GAS INDUSTRY
- DEFENCE
- ORTHOPEDIC IMPLANTS
- GENERAL ENGINEERING

#### OUR GROUP COMPANIES



SIDDHI FORGE

SIDDHI CNC PVT. LTD.



SIDDHI PRECISION

## Why Investment Casting?

### DESIGN FLEXIBILITY

Investment casting produces near-net-shape configurations, offering designers and engineer's freedom of design in a wide range of alloys. The process is capable of producing precise detail and dimensional accuracy in parts weighing few grams to many kilograms.

### WIDE RANGE OF ALLOYS

Many ferrous and non-ferrous alloys are routinely cast at **M/s. BHINGARE CASTINGS PVT. LTD.**

### REDUCTION OF PRODUCTION COSTS

Costly machining operations are reduced and often eliminated. No capital equipment investment is needed to produce parts in-house.



## REDUCTION OF ASSEMBLY OPERATIONS

Several parts can be made as one casting, reducing handling, assembly and inspection costs.

## REPRODUCTION OF FINE DETAILS

Splines, holes, bosses, lettering, serrations and even some threads can be cast.

## CONSISTENCY OF COMPONENTS

Since cast components are produced by using wax patterns from a single tool, dimensional accuracy is the same from part to part, year after year. When design changes are required, it is usually possible to alter existing tooling at a relatively minor cost.



# FACILITIES

WELL EQUIPPED FACILITY OF TOOL ROOM.



## WAX INJECTION MACHINES

Vertical and Horizontal type Wax Injection Machines.



## SHELL ROOM

Complete Air Conditioned setup with Sand raining machine, Slurry pot mixer, Dewaxing oven, DG set and elaborate shell drying system.



## MELTING FURNACE

Induction Melting furnace – 175 KW with 2 pots of 175 Kgs.



## MATERIAL TESTING LAB

Spectrometer: SPECTROMAXx F High End CCD Optical Emission Spectrometer.

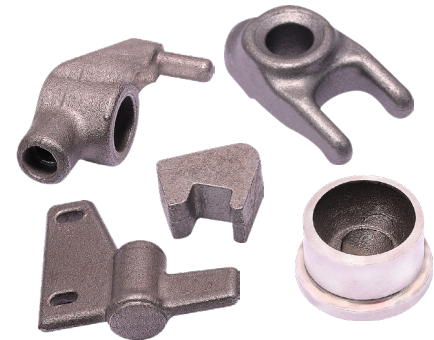
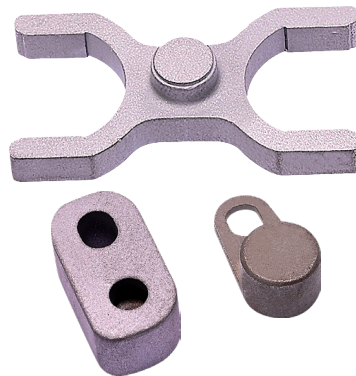
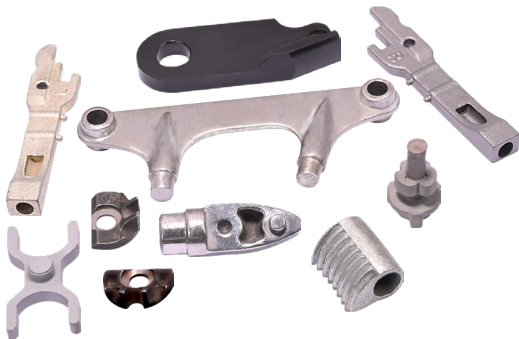
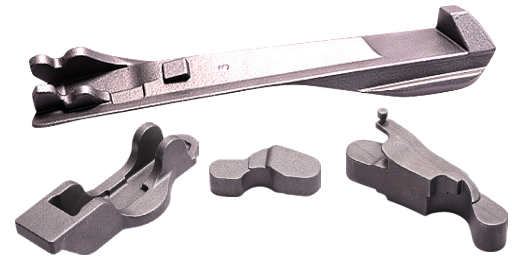
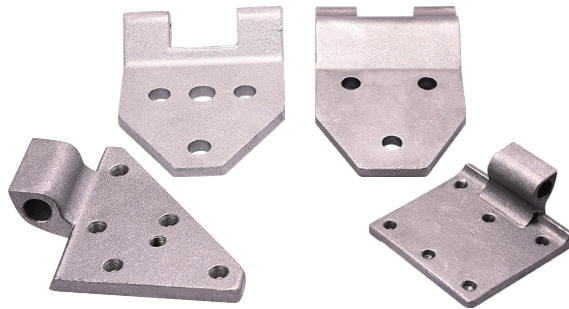
COMPONENT TESTING FACILITY AVAILABLE FOR DIMENSIONAL AND OTHER PHYSICAL PROPERTY CHECKS.

## PRODUCT CAPABILITY

- **WEIGHT RANGE:** 10 GMS. TO 15 KGS.
- **MINIMUM WALL THICKNESS:** 2 MM.
- **WORKING IN FOLLOWING MATERIAL GRADES:**
  - CARBON STEEL:** EN1A, EN8, EN9, EN31, WCB, 16MNCr5, 39NICr3MO, 20MNCr5, SAE 8620 ETC.
  - STAINLESS STEEL:** CF8, CF8M, CF3, CF3M, SS 310, SS 303, SS 410, ASTM F 745-07, 17-4PH, CA15, CA40 ETC.
  - NON-FERROUS:** BRASS, AB, PB ETC.



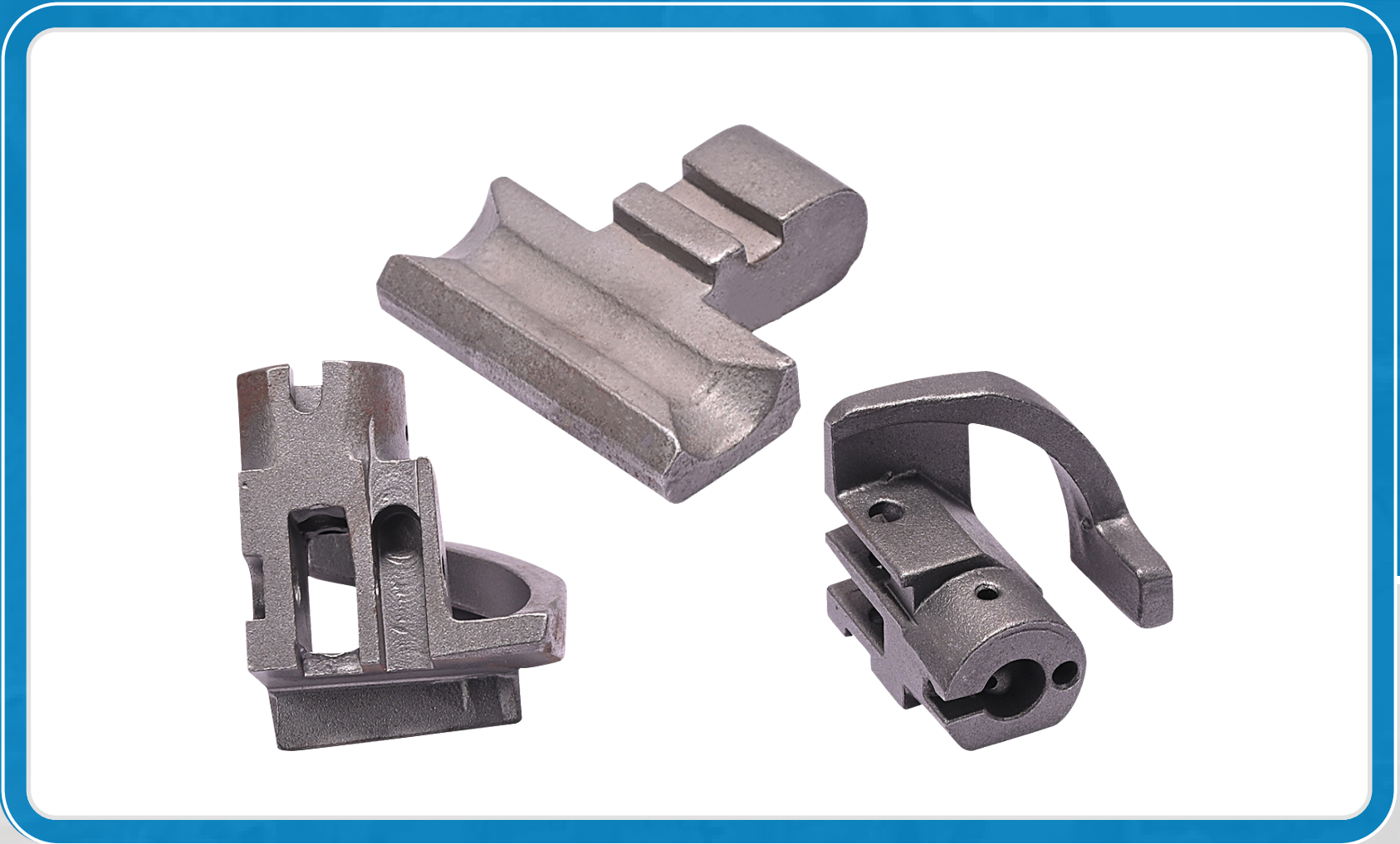
# AUTOMOBILE COMPONENTS



# BOILER PARTS

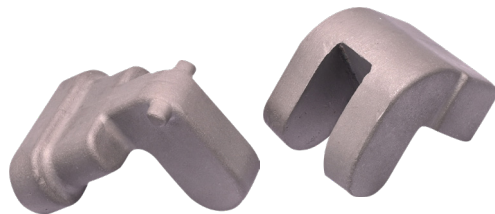
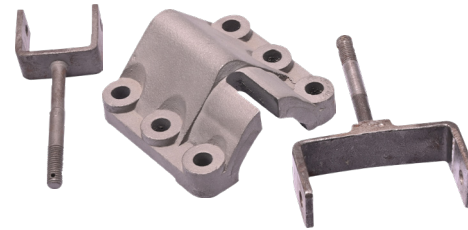


# DEFENCE PARTS

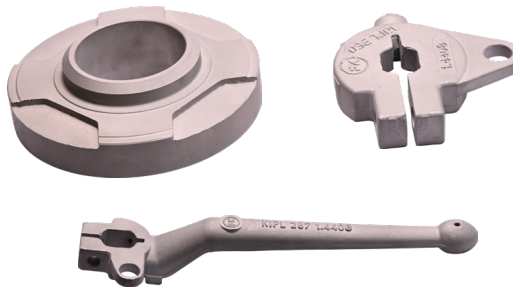
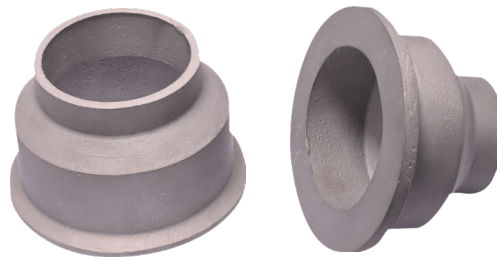




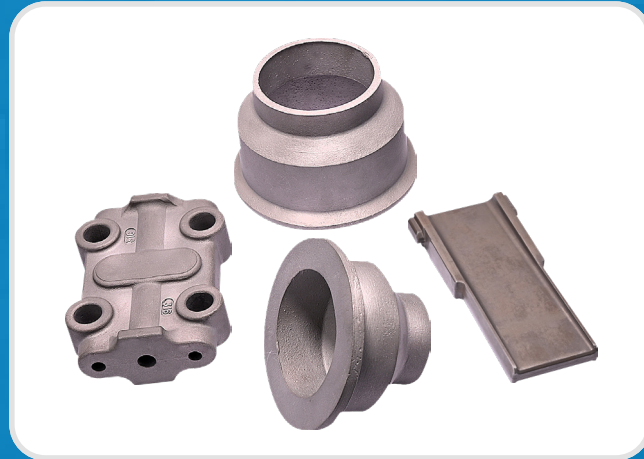
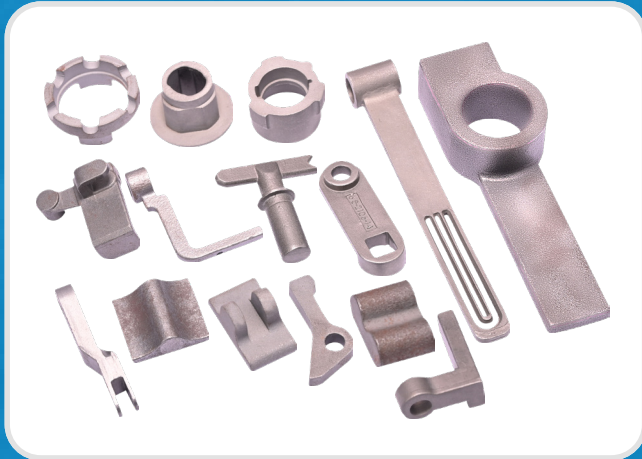
# ELECTRICAL INDUSTRY PARTS



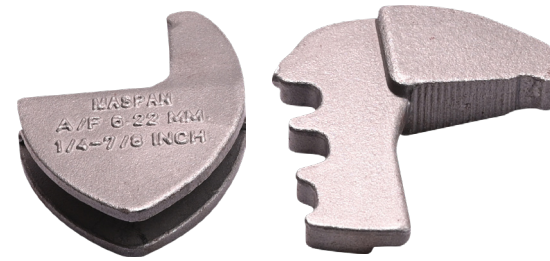
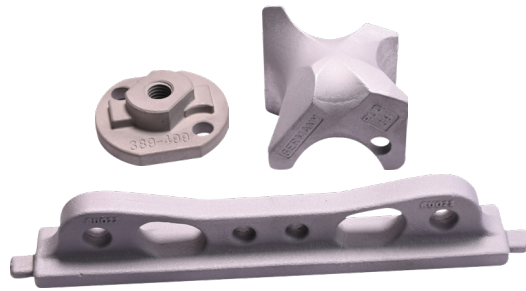
# FOOD INDUSTRY PARTS



# GENERAL ENGINEERING PARTS



# GENERAL ENGINEERING PARTS

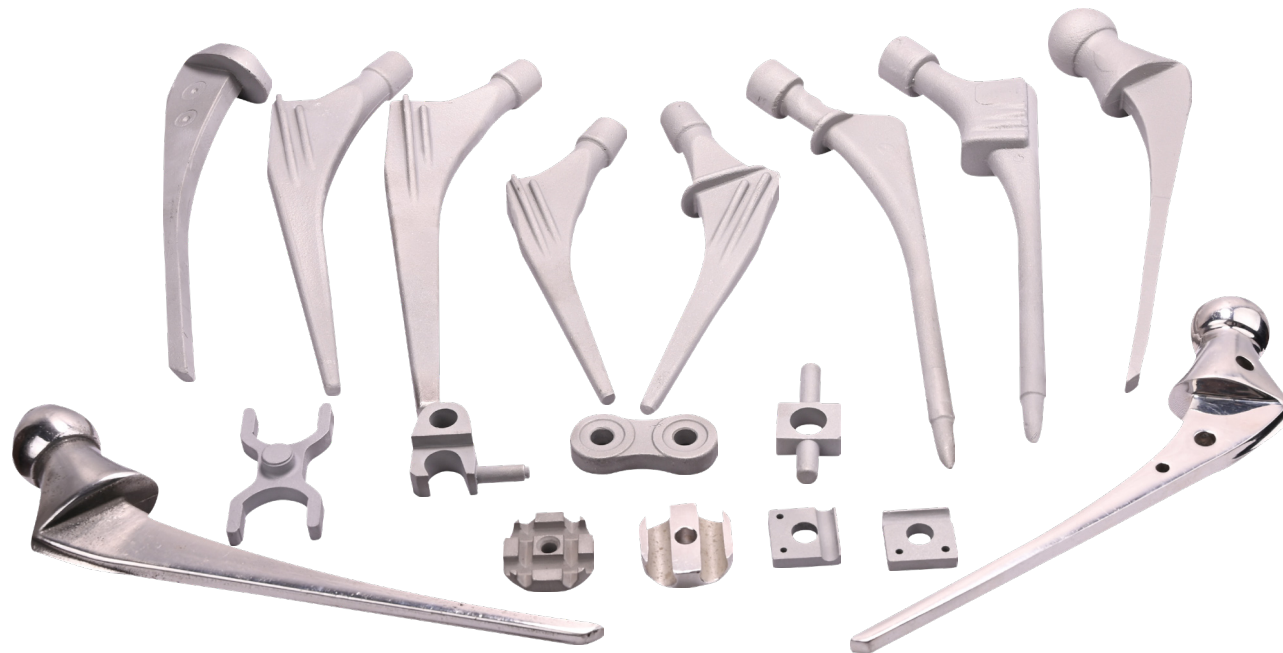




# MECHANICAL FACE SEALS



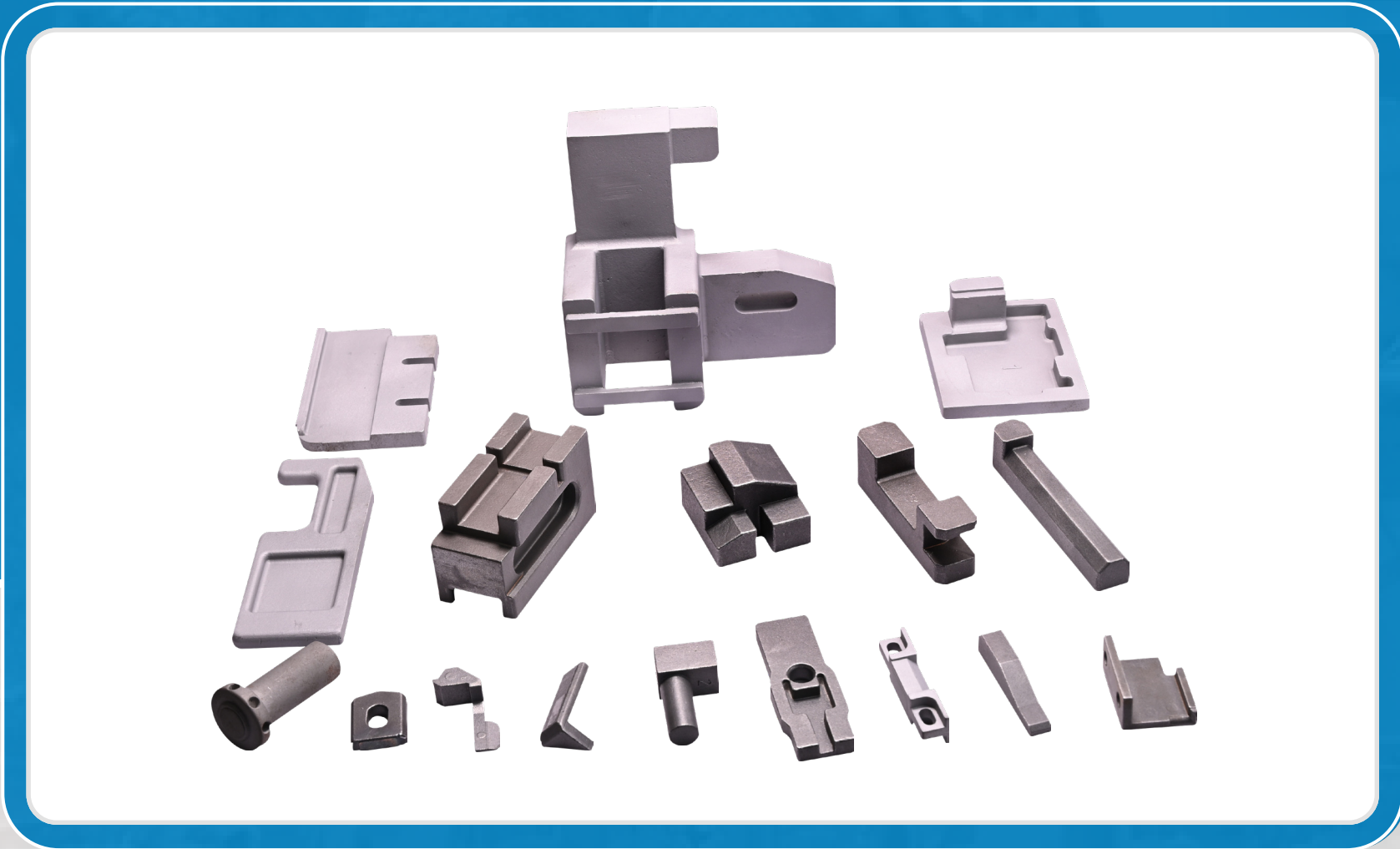
# MEDICAL IMPLANTS



# NON-FERROUS PARTS

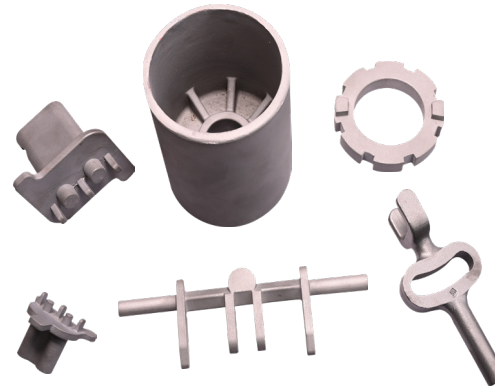
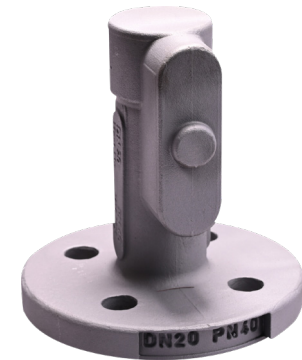


# HARNESS TOOL PARTS





# VALVE INDUSTRY PARTS



# VALVE INDUSTRY PARTS



## — OUR CLIENTS —



M/s. BHINGARE CASTINGS PVT. LTD.



H.O. & WORKS : PLOT NO. F-9, M.I.D.C. AREA,  
AHILYANAGAR, MAHARASHTRA, INDIA - 414111.



+91 9119559007 • +91 9225837333  
+91 9225308077



bhingare.castings@gmail.com  
suhas@bhingarecastings.com



[www.bhingarecastings.com](http://www.bhingarecastings.com)

